



www.elpootomasyon.com





PROFESSIONALS WITH AMATEUR SPIRIT



Our company, which has been operating in the field of Computer Systems and Communication Technologies for more than 25 years, has adopted the principle of making superior effort in order to achieve unconditional customer satisfaction in every customer it serves.

Our company with amateur-spirited young and dynamic team and with their the professional approach in mind, fosters its customer portfolio and are moving confidently towards goal only to lead the industry in Turkey but worldwide. Our company, which has many certificates in the professional fields, works to provide quality and state-of-the-art service to our solution partners thanks to the products we have developed with innovative ideas within the framework of our experience, knowledge and expertise. Our company, which has a determined and strong management team that will never give up the understanding of "We are with you tomorrow as well", turned to the field of project engineering and started to produce corporate project solutions.

With years of knowledge, our ethical values, our command of innovation and our stance that never compromises our principles, the most important of our goals is sustainability with continuous improvement, leadership in the sector and the customer satisfaction. We have accelerated our efforts to realize our vision. With the superior performance of our software and R&D departments, we are moving towards continuous development and improvement for new areas.

We aim to double our success with Integrator and Business Process Model and Notation (BPMN) modules that we will share with our solution partners in order to provide high-quality service for technology development, grow with our solution partners, and sign projects that will create value for the country

1





OUR DIFFERENCE

- Parametrically detecting sales or refueling when the automation system is turned off
- Operating devices of the same type and different brands on the same port
(Ex: Probe; Vedeer-Root and Start, Interface; Orpak and Teosis Interfaces)
- Compliance with tanks with a manifold system
- Real-time remote control with modern WEB and mobile application, as if you're next to the automation computer

OUR ADVANTAGE

- Domestic and custom equipment production and software development.
- Minimal Software Error and Failure Rates in the Industry
- Zero Cost in Transformations!
- EMRA Data Tracking Unit
- Free Security Software
- Online Service Tracking System
- Stock Tracking
- Tanker Truck Tracking System (Agricultural fuel trucks)
- Unlike devices brought from abroad, all devices can be redesigned and produced for custom needs, creating the fastest and most effective solutions compared to other companies.
- With its transparent call center and fault records, your stations will never stop and you will not lose money with the least error and failure rates compared to all other companies in the sector.
- No more replacing all ATG and probes due to ATG or Probe devices that fail after software or system transformation because our system is compatible with all brand and model hardware equipment in the industry. As a one-of-a-kind in Turkey, it has the ability to work with different tanks concurrently.



THE PUMP AUTOMATION SYSTEM

ELPO pump automation system is based on a design to have a cash register, pump, and interface units connect into one single computer and they are managed, controlled, logged, and tracked by using special automation software. Sales data from a pump is transmitted to the system and recorded on a robust database. Then these sales data will be processed for flexible reporting. The gas station sales, stock, and control data are gathered in the local computers. And the information is transferred to the related distributor via web services. Customers can check and follow the fuel supply from the customer screen in the gas station's market. Gas station's authorities are able to track and control the system from an internet web interface or mobile device at any time, and they can make the necessary observation. The pump attendant recognition system controls which fuel pump is operated by whom.

ONLINE PUMP TRACKING

The information on the pump status (amount of fuel, amount of money, the license plate of the fueling vehicle, name-surname of pump attendant) can be instantly monitored on the market screen during sales, on the web interface in the internet environment.

PURCHASE COMPLETED

After purchase completed and receipt printed out from the cash register, you are able to see "pump is closed" message on market's control screen and track amount of fuel, amount of money, license plate of the fueling vehicle and name-surname of pump attendant by using internet platform, web interface, or mobile device.

PUMP PRICE ADJUSTMENT

You are able to adjust product prices in all pumps from the automation computer, mobile devices or web interface. It is not necessary to close the current shift in order to adjust the new prices. This adjustment does not affect the shift reports.



3



FUEL-TYPE CONSISTENCY

Tuva Card Reader warns with a signal if a customer tries to purchase a different fuel type based on the previous sales.

GAS STATION ATTENDANT CARD

This card contains pump attendants ID information and without identifying himself/herself to the system via card reader the pump does not start refueling.

DISCOUNT AND LOYAL COSTUMER CARD

In case of apply special discounts for special customers, determine product base discount percentage or monetary discount amount from central computer. Before pumper scan his/her own staff member card, s/he scans the customer's card therefore loyal costumers` price detect by pump then fueling starts as soon as staff member card is scanned too.

MOBILE COSTUMER RECOGNITION SYSTEM/MCRS

This system allows customers who has fleet vehicles or company vehicles are able to determine fuel amount and pay via mobile devices.

SPECIFY LIMITS FOR COSTUMER CARD

Companies with vehicle fleet owners can control their fuel purchases as limit their purchases daily, weekly and monthly by the cards they

VEHICLE RECOGNITION SYSTEM / VRS

The vehicle recognition system is designed to check & control fuel expense or define daily, weekly and monthly limits for your company vehicles or fleet. Fueling never starts before the fuel pump gun enters into your vehicle`s gas tank. If the fuel pump gun gets out of from the gas tank during fueling, the fuel pump interrupts fueling immediately therefore you can make sure about your gas is pumping only in your vehicle's gas tank.

SHIFT TRACKING

Once you plan and define the shift system, it smoothly works on internet platforms, web interfaces, and mobile devices. It also provides good data to measure and report the pump, nozzle, pump attendant, and fuel sales amount base on currency and liter. In the pump automation system, pump attendants can be assigned any of the active nozzles, for refueling. The end of shift report covers all sales information during that shift signaling the performance of the attendants. In order to have a robust shift report, the discount prices and discounted amount in liters also carried out in a detailed way.

FLEXIBLE REPORTING

It is as understood by the title the pump automation system allows a variety of reporting based on sales, vehicle license plate, pump attendant etc. by using a computer in a gas station, mobile device or in internet platform.



PUMP AUTOMATION SYSTEM

GENERAL PROPERTIES

- Point Tracking
- Quick sales
- Vehicle License Plate Tracking
- Tracking of sales on credit
- Sales Analysis
- Quick and easy to use
- Designable Reports
- Decision-Support Reports
- User-friendly design
- User-based customization
- Compatible equipment
- Designable Printer Output
- Records (audits) of transactions
- User authorization according to transaction and task
- Outputs in different formats (Excel, Pdf, Txt, Xml, Image etc.)



HOW DOES PUMP AUTOMATION SYSTEM WORK?

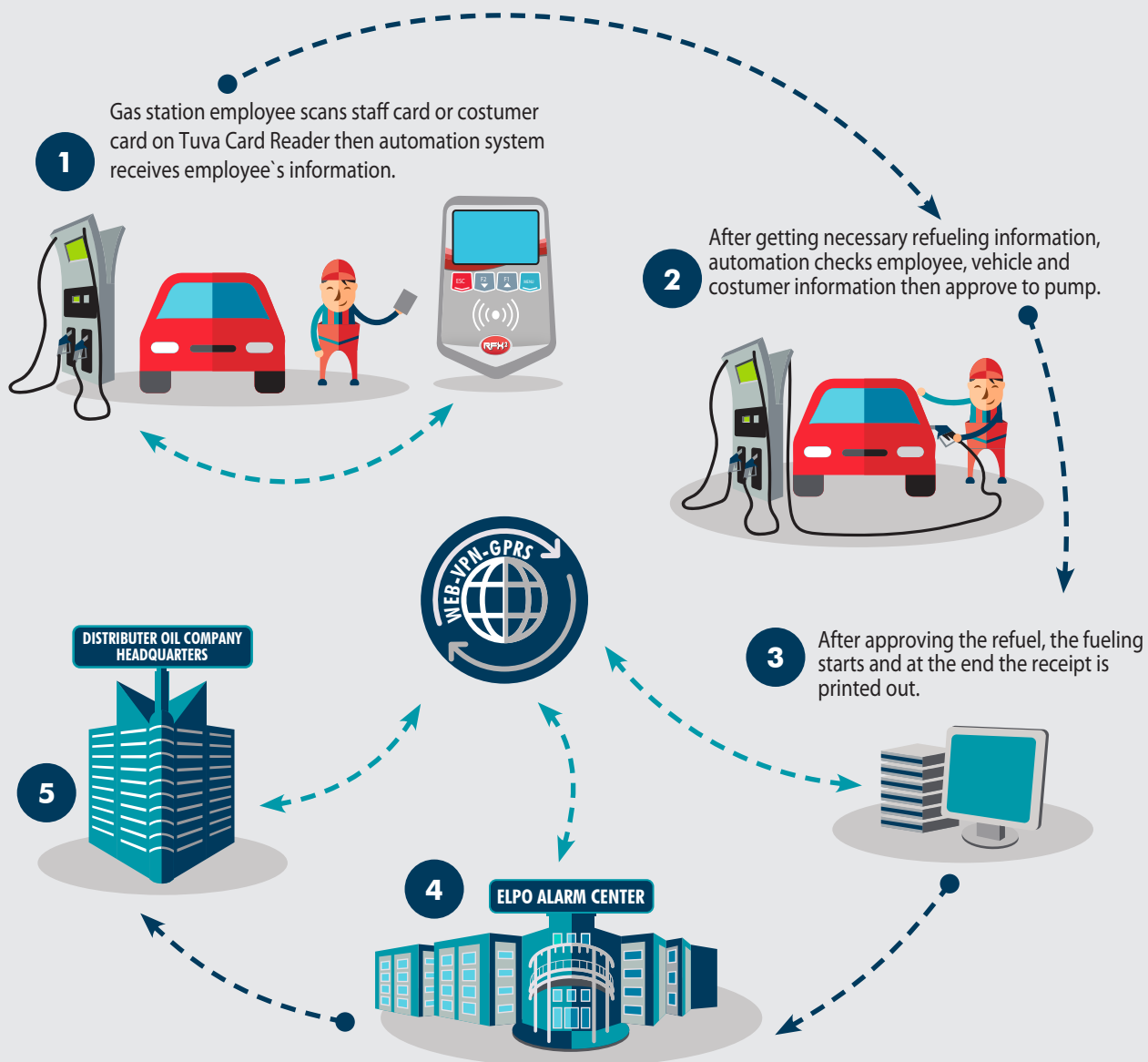
Gas station employee scans staff card or customer card on Tuva Card Reader then automation system receives employee's information.



After getting necessary refueling information, automation checks employee, vehicle and customer information then approve to pump.



After approving the refuel, the fueling starts and at the end the receipt is printed out.





TANK AUTOMATION SYSTEM

ELPO Tank Automation is a software that is compatible with the Pump Automation System which is designed by ELPO Engineering Teams. Fuel, water, and temperature information in the tank is measured every second with the use of ELPO electronic measurement probes installed inside of tanks in gas stations. With the tank automation system, tank fuel level can be monitored & tracked instantaneously and remotely by the station on the internet, web interface, and on all mobile devices. As tank fuel levels are read, they are automatically stored in the database. All stored data may be transmitted to outside authority servers momentarily and they also can be reported at any time. The system enables automatic level warning and refueling messages to the distributed control center. Inventory tracking could be under the control with logging of all necessary details of the fueling of the tank. Furthermore, critical stock level and leakage status can be set and monitored via the Tank Automation System.

TANK REFUELING; The refueling made in the tank are recorded with all its details in electronic environment. These records are stored in database and they are available to reach any time.

TANK ALERT; Events in the tank like high temperature, low temperature, high water level, low water level, leakage etc. notified to user as warning.

LEAKAGE INSPECTION; In case of reduction of fuel from tank without pumping or leakage cause of fitment failure detect then notified to user and alert center as warning.

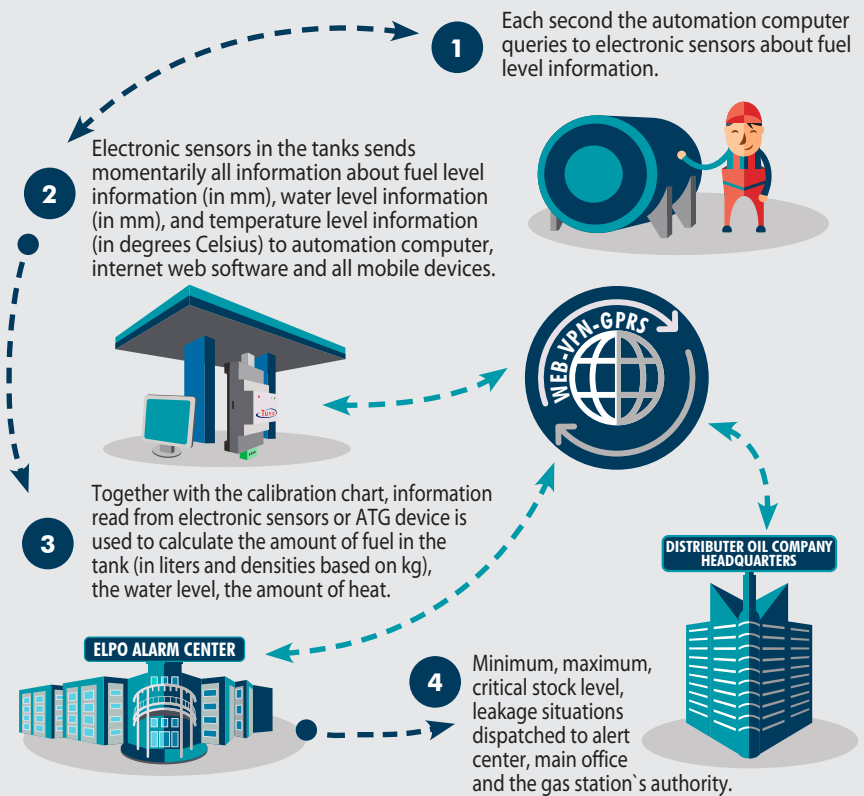
MAIN CONTROL; The instantaneous data of all the tanks in a gas station can be monitored and controlled from a center place or online via mobile devices.

TANK CALIBRATION; It is a process to show the amount of fuel in the tank (liter and density in kg basis) at real values. They are displayed as 3D Laser Calibration, calibration pump, tank movements history is compared with each other or by using current calibration chart. Hence specified alarm levels work effectively. Beside this; amount of sales made by pump compare with amount of fuel exhausted from the tank then check as they are equal or not.



HOW DOES TANK AUTOMATION SYSTEM WORK?

- Each second the automation computer queries to electronic sensors about fuel level information.
- Electronic sensors in the tanks sends momentarily all information about fuel level information (in mm), water level information (in mm), and temperature level information (in degrees Celsius) to automation computer, internet web software and all mobile devices.
- Information where read from electronic sensors or ATG device calculate according to calibration chart then provides to show amount of fuel in the tank (in liters and densities based on kg), the water level, the amount of heat.
- At certain intervals it records to automation computer and sends to company-wide central main server.
- Minimum, maximum, critical stock level, leakage situations dispatched to alert center, main office and the gas station`s authority.



ELPO TANK TECHNOLOGIES

- Underground Tanks,
- Surface Tanks,
- Custom-designed Tanks,
- Mobile Tanks,
- Container Tanks,
- Vehicle-mounted Tanks

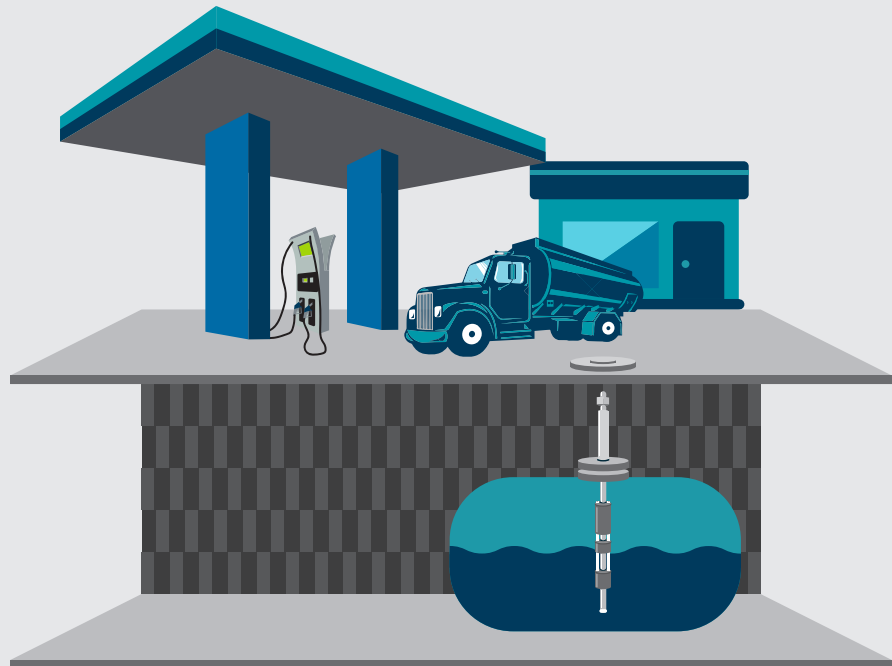
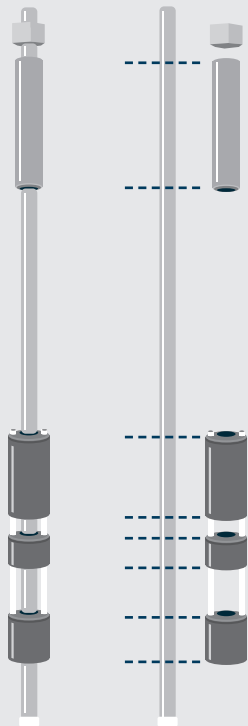
THE TANK AUTOMATION SYSTEM

- Fuel Stock Management,
- Automatic Calibration Process,
- Real-time Tank Levels
- Overflow and Leakage Warnings,
- Easily read visual design for your custom needs.



HOW DOES PROBE WORK?

The probes are electronic sensors in the tanks that sends continuous information about fuel level (in mm), water level (in mm), and temperature (in degrees Celsius) to the automation computer which is also accessible via web software and all mobile devices







THE TANKER TRUCK AUTOMATION SYSTEM

ELPO Tanker Truck Automation system records fuel sales in an electronic platform while the gas refueling service is offered to the agricultural vehicles in the rural areas. Then the local data is sent to the main server via GSM, GPS, GPRS. With this software and product infrastructure, you are able to check & track and report sales from a tanker truck at any time and any place.

ETOS which is ELPO Tank Truck Automation System, provides the convenience of setting up the Tank Automation system by its plug-and-play feature. It is pretty easy to configure the device. Since ETOS runs with HTTP/SOAP protocol, it is compatible with other automation systems too.

The truck where this system will be applied should have a digital counter. This is done with a small modification. After the official inspection, The Tanker Truck Automation system will be ready to be mounted. The electronic unit and fuel pump nozzle which is on the truck will connect to the hardware and it manages the valve of the electrical remote controller. ELPO Tank Truck Automation system hardware mounts in the truck's cabin.

It is easy to use and the device prints out the receipt from the built-in printer according to the device model. Optionally the system can be operated by RFID card reading according to the device model. If the customer wants, the pump and truck attendant can be forced to identify themselves with the user card before the refueling starts. Then it transfers this sale info to the main server via GSM, GPS, and GPRS. It works together with the Main Station Management Dashboard.

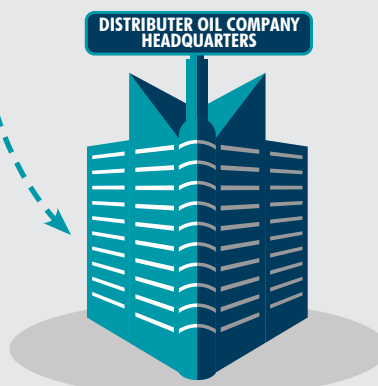


HOW DOES THE TANKER TRUCK AUTOMATION WORK?

- 1 TAS authorizes the pump on the tanker. Fuel is given per the customer's request.



- 2 The sales process is completed and the data is transferred to the servers over GPRS.





THE VEHICLE RECOGNITION SYSTEM (VRS)

The Vehicle Recognition System (VRS), which is used to keep your fuel expenses under control or to limit by determining daily, weekly and monthly limits, you can access information such as which vehicle, where, when and how much fuel your vehicle consumed per km from anywhere at any time. Refueling does not start before the fuel pump nozzle enters the tank of your vehicle, if the nozzle is removed from the tank during refueling, the fuel pump automatically cuts the fuel supply, so you can be sure that the fuel taken is filled into the tank of your vehicle. Thanks to this data, you can have a complete and detailed control over fuel costs and prevent losses. Thanks to the mileage control, you can monitor the consumption performance of your vehicle and even get information about your vehicle's service maintenance times. Also; by integrating with our fleet management system, you can buy fuel at all stations of your contracted fuel company according to your limit, reduce your cost by making a bulk purchase discount, and reduce your accounting processes.

ACTIVE VEHICLE RECOGNITION SYSTEM; It is an improved model of passive VRS. Unlike the Passive VRS system in the Active VRS system, RFID tags have a transmitter and a power supply. The power supply activates the microchip's circuits, sending a signal to the reader. Consequently, it has a greater reading range than other VRS systems. Vehicle identification unit, which is attached to your vehicles and contains your vehicle information, communicates with the pump at the moment of refueling and automatically transfers vehicle and mileage information to the system. Communication takes place when the pump nozzle is placed in the vehicle's tank. Vehicle information is transferred to the Station Control Unit via the vehicle identification unit and tank antenna. Upon getting approval from the Station Control Unit, the pump starts the refueling. If the pump nozzle is separated from the vehicle tank during the refueling, the supply is automatically cut off. At the end of the refueling, a refueling receipt containing information about refueling (liter, unit price, product type, date, time, vehicle plate) is automatically printed and given to the driver for information.

PASSIVE VEHICLE RECOGNITION SYSTEM; The vehicle identification unit, which is attached to your vehicles and contains your vehicle information, communicates with the pump at the time of refueling and transmits the license plate information. The communication takes place when the pump gun is placed in the tank of the vehicle. Vehicle information is transferred to the Station Control Unit via the vehicle identification unit and tank antenna. Upon getting approval from the Station Control Unit, the pump starts to supply. If the pump nozzle is separated from the vehicle tank during the refueling, the supply is automatically cut off. At the end of refueling process, a receipt containing information about the refueling (liter, unit price, product type, date, time, vehicle plate) is automatically printed and given to the driver for information.



FULL CONTROL OVER FUEL CONSUMPTION;

With ELPO VRS, you are able to get daily, weekly, and monthly reports about your vehicles' fuel refueling and consumption rates. You control fuel consumption according to preset fuel quotes per vehicle.

PRACTICAL AND FAST FUELING;

No more waiting at the cash register or at the pump for payment. You can shorten your period and process of fueling for your fleet bringing a lot of time and resource savings.

EASY PAYMENT;

You can plan all payments in one place monthly or at specific times according to your business plan.

EASY ACCOUNTING ;

With VRS in use, your fuel invoices will be ready at a certain time according to your business relieving many work hours and paperwork. This system provides you with a very quick and smooth accounting process without possible human errors and latencies.

LITER / MILAGE TRACKING;

Possible losses are prevented by ensuring a full and detailed control over fuel expenses. Thanks to the mileage control, you can monitor the consumption performance of your vehicle.

HOW DOES THE VEHICLE RECOGNITION SYSTEM WORK?

The vehicle, in which the ELPO Vehicle Recognition Device is placed, approaches the pump with the vehicle recognition unit.

When the station staff places the nozzle in the fuel inlet of the vehicle, the system installed on the vehicle and the system on the nozzle communicate with RFID technology.

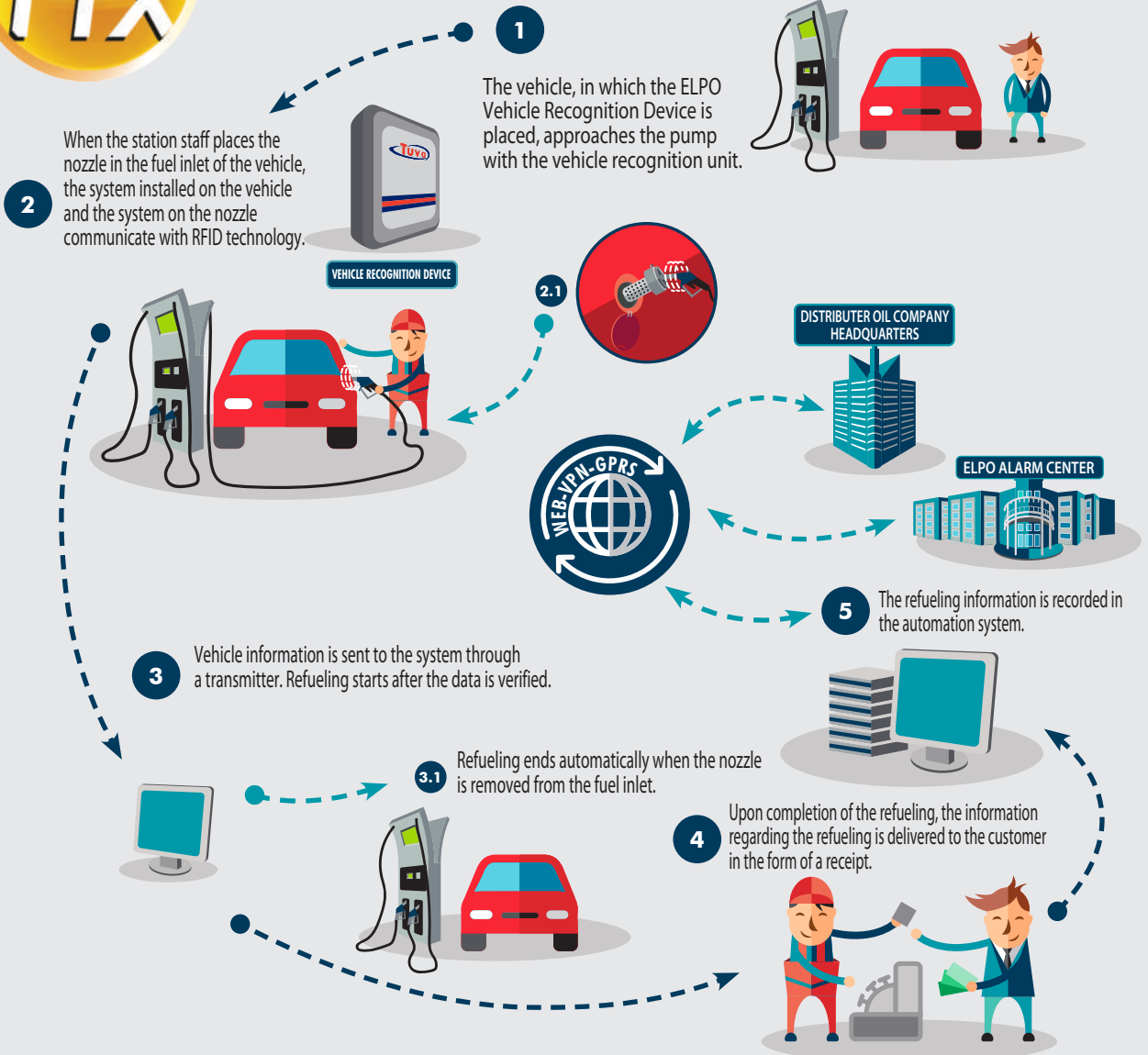
Vehicle information is sent to the system through a transmitter. Refueling starts after the data is verified. Refueling ends automatically when the nozzle is removed from the fuel inlet.

Upon completion of the refueling, the information regarding the refueling is delivered to the customer in the form of a receipt. In addition, this information is recorded in the automation system.





THE VEHICLE RECOGNITION SYSTEM





THE CUSTOMER RECOGNITION SYSTEM (CRS)

You are able to track and control anywhere anytime fueling expense or limit it to daily, weekly, monthly for any of your vehicles as to where, when, how much fuel is supplied, and how much fuel spent per kilometer by using the Customer Recognition System. It provides you the detailed fuel consumption and you can take precautions about the possible loss. Thanks to mileage control, you can follow your vehicle's fuel consumption performance and even you can have an idea about the maintenance time of your vehicle. Because of integration of our fleet management system and Customer Recognition System, you can buy fuel according to your quota in any gas stations of your contracted company and you can take advantage of the gross purchase discount.

RFID technology is used in Customer Recognition System. This system provides fast processing and a safe environment.

It reports the total fuel consumption of your fleet, company, and driver. It also reports the amount of fuel which is given by the pump attendant, total price, vehicle's total kilometer information and total fuel amount for of each CRS connected.

As RFID card recognizes the vehicle after the scanning, the system requires the user to insert total kilometer information. Fueling get starts after kilometer information is inserted. Otherwise, the pump doesn't start refueling.

It's not possible refuel another vehicle with a different card for the customer. (the entered license plate number in cash register is compared with license plate number on vehicle's card.)

RFID prevent the refueling of different type of fuel into vehicle according to information what is set in the system.

Using the card which is given to companies they can track their company fleet's fuel consumption daily, weekly, and monthly

HOW DOES THE CUSTOMER RECOGNITION SYSTEM WORK?

- Vehicle approaches to any fuel pump.
- The fuel pump nozzle is placed in the vehicle's fuel inlet.
- Customer or Vehicle card scanned by RFID.
- Customer-specific price is sent to the fuel pump nozzle which is attached to the vehicle's fuel inlet. (According to the customer's contract, the price can be discounted or not)
- Refueling starts after the vehicle's kilometer info is entered via an RFID card scanner.
- After the refueling process is completed, fueling information (liter, unit price, product type, date, license plate number) receipt printed out automatically and is given to the driver.

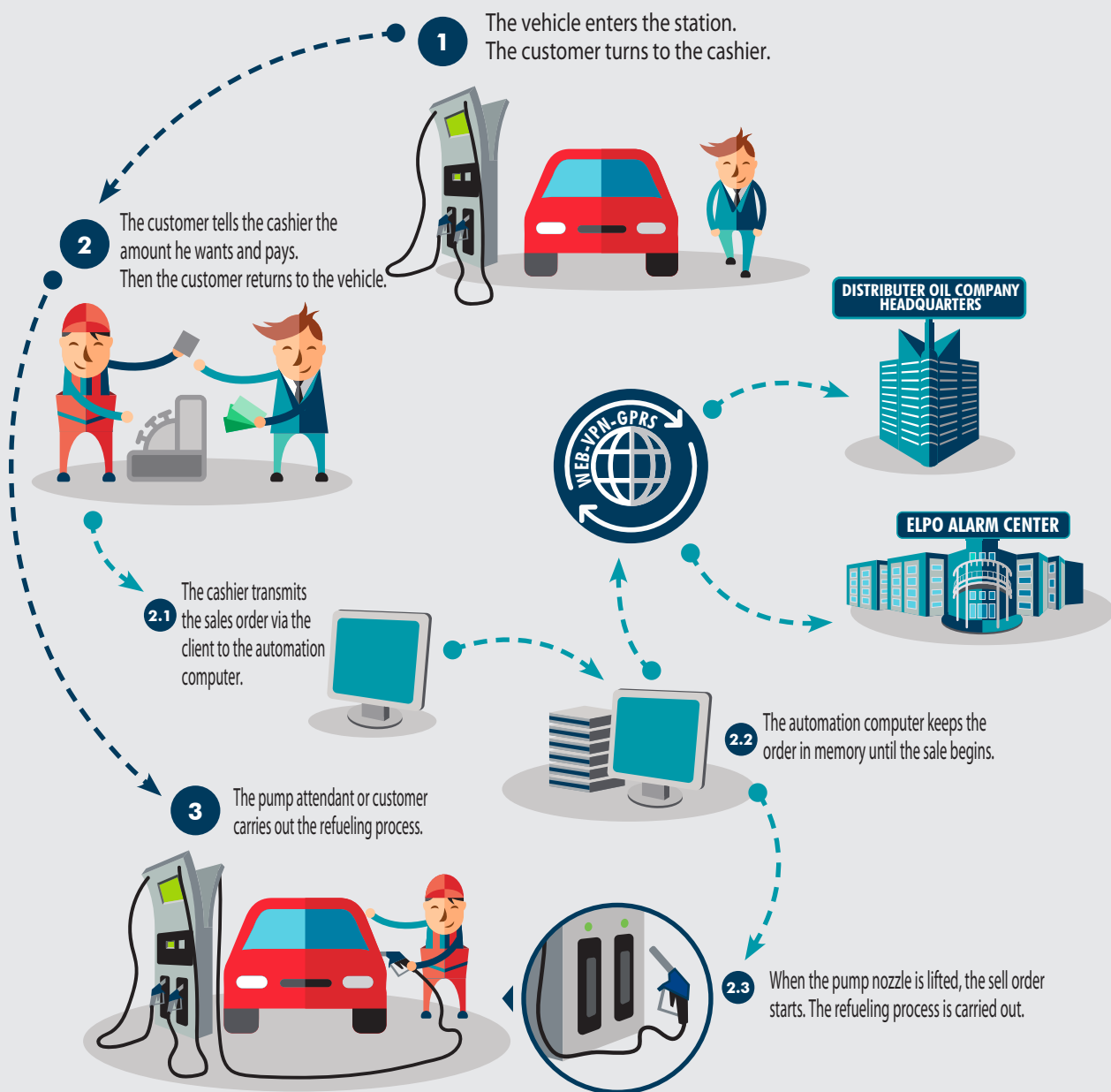


PRE-PAID SALES SYSTEM

Alternatively, the prepaid system has been developed according to preference of station's operating models. This system is useful for businesses such as construction sites that are working without cash registers by taking pre-sales permit. The pump attendant, vehicle drivers or customers only carry out the refueling process by getting sales permit through the cashiers or controllers. The operation of the system is ensured by working in full harmony with the Pump Automation System. Cashier definitions are made by establishing a connection over the same network between the Fuel Automation Station System installed at the gas station and the cashiers (clients) connected to the main server. Thus, the Prepaid Sales System is activated and the sales are recorded by the system. Cashiers and pump attendants who make sales can be analyzed and issued sales permits can be canceled by the cashier who issued the permission. Sales can be monitored and reported instantly on both the Pump Automation and the Prepaid Sales System. Sales waiting situations, pump error conditions and sales active statuses can be seen on the monitoring screen. After the sales permit is given, a receipt can be printed or a receipt can be issued at the end of the sale by granting an unlimited sales permission. Sales permit can be given for liters or money amount, different prices can be defined for different fuels, one of them can be selected before the sales order.

TECHNICAL SPECIFICATIONS

- The Fuel Automation System is Installed on the main server on the Station
- Cashier and Personnel Definitions Are Made on the Main Server
- Prepaid Sales System is Installed and Defined on the Same Network
- The authenticated personnel are logged on to the system.
- Through the Monitoring Screen, the personnel issues sales permits.



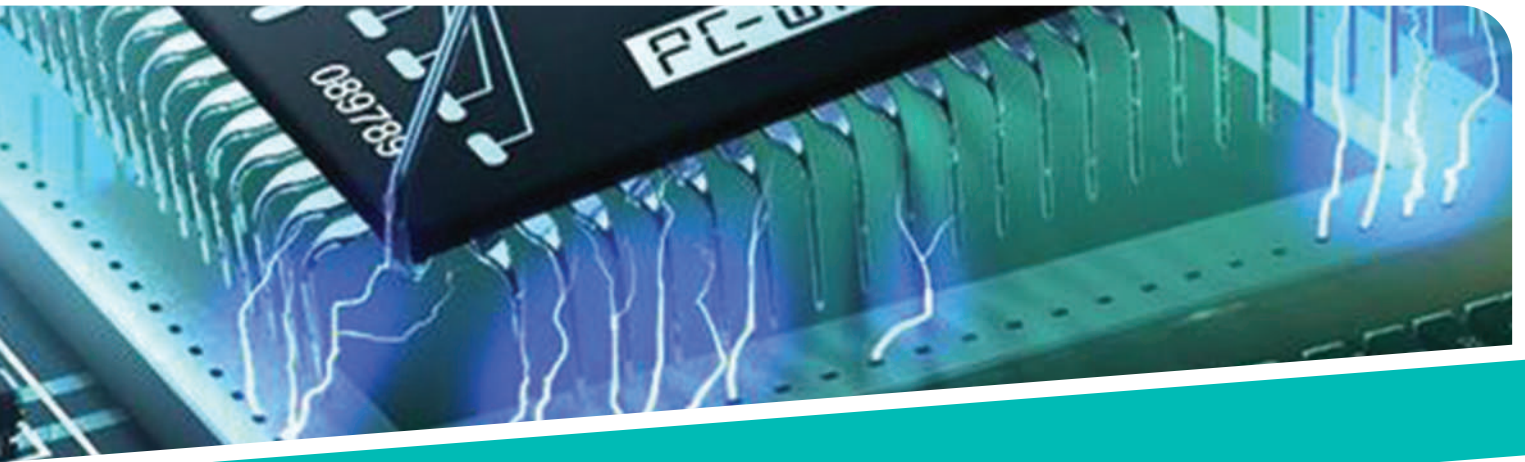


THE MAIN STATION CONTROL DASHBOARD

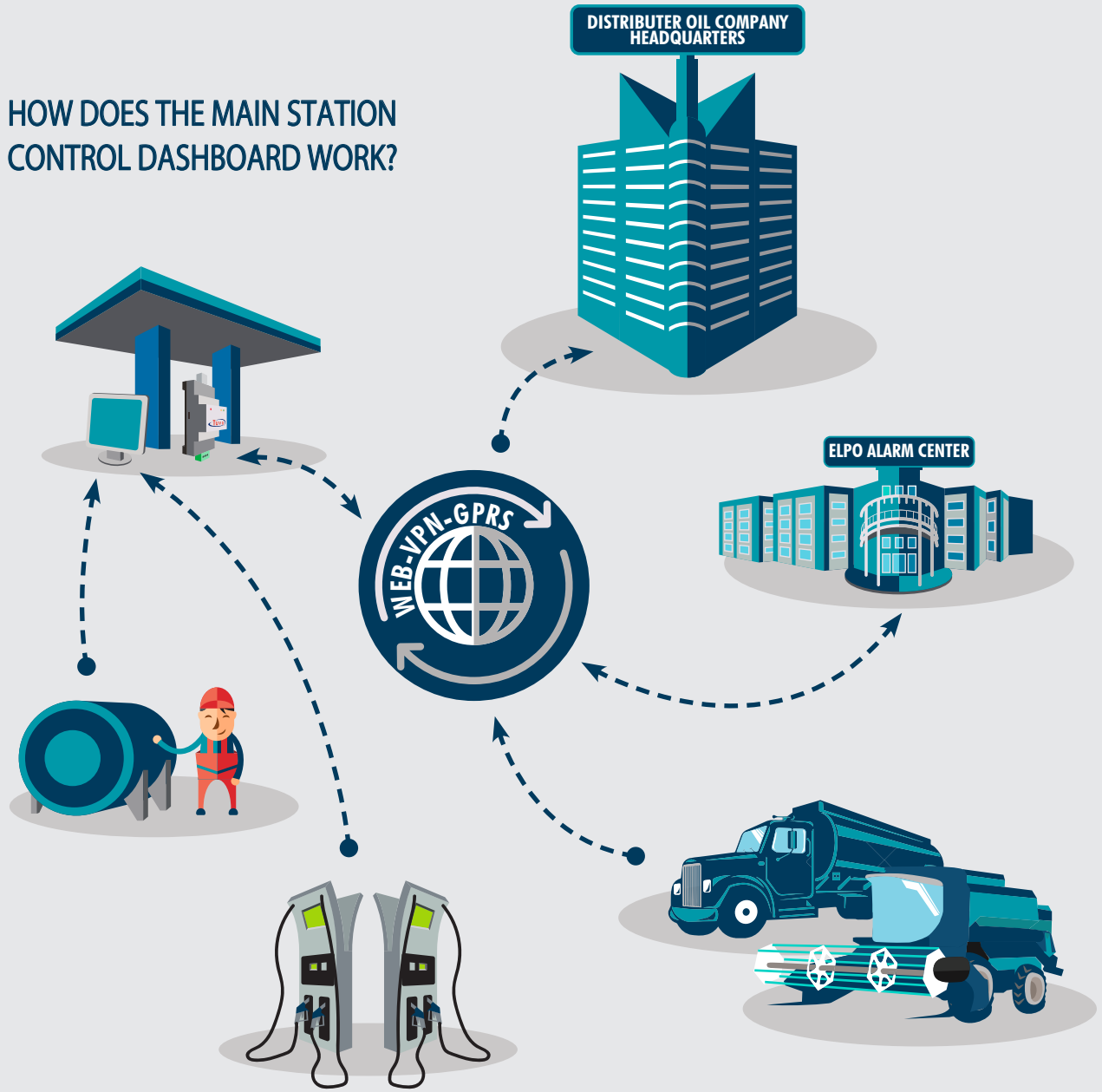
THE MAIN STATION CONTROL DASHBOARD allows you the online tracking and control of every aspects of your fuel from the central office by receiving data from the Pump Automation, the Tank Automation, the Tanker Truck Automation, the Vehicle Recognition System and the Customer Recognition System. This dashboard, which allows instant central control and reporting via software from your central office, has been developed by ELPO Engineers to work on the internet and mobile devices. Thanks to this system, which is fully compatible with our other automations, you can easily obtain your reports and analysis. You can see the station pump and tank status simultaneously with the station computer.

GENERAL SPECIFICATIONS

- One-screen data analysis for many system outputs.
- Station Analysis Dashboard,
- Instant Monitoring of pump sales,
- Instant Monitoring of tank status,
- Pump price update,
- Real-time pump prices
- Alert and Warning Monitoring
- Instant Tank refueling Warning (Refueling is started, refueling is over)
- Tanker truck sales information,
- Analysis (location of gas stations on map, checking data-consistency, tracking online or offline status)
- Failure Tracking (Tracking of pump, tank, automation failures and keeping failure event logs.)
- Suitable for governmental rulings.
- Alert Management in line with government ruling requirements
- Address book feature (Gas station authority and Emergency Contacts),
- Sales Assistant, Regional Director, Field Manager Analysis and Reports
- Dispatch bill operations,
- Dealer data,
- Define Pump and nozzle information,
- Tank and Fuel Pump Nozzle Connections
- Service Password Management



HOW DOES THE MAIN STATION CONTROL DASHBOARD WORK?





CENTRALIZED ALERT MANAGEMENT SYSTEM (CAMS)

ELPO Centralized Alert Management System (CAMS) is able to determine failure and transmit it to the central monitoring station instantly.

GENERAL SPECIFICATIONS:

- It detects potential CPU, RAM, HD hardware failures that might negatively affect the automation computer's stability.
- It hides desktop information on the automation computer.
- It blocks another unwanted software to run on the system,
- It checks the automation computer's connection to the main server,
- It tracks pump failures and detects communication problems,
- It checks whether the pump is connected to a tank.
- It prevents sales if the pump is not affiliated to a valid tank,
- It warns the system administrator, if the fuel decrease from tank without any sale,
- It checks the tank's minimum and maximum water level values and sends warning to the alarm center
- It continuously checks min. and max. temperature levels inside the tank, and warns system administrator accordingly,
- It checks tank communication connections and warns in the case of malfunction,
- In case of a communication failure between tank and connected pumps, it stops fuel sales to control the system.

THE CONSTRUCTION SITE AUTOMATION SYSTEM

The basis of the Construction Site Automation system is that the pump and tank units in the construction sites are connected to an embedded computer and managed and monitored with software written specifically for the construction site. Sales made from the pump are electronically transmitted to the system and recorded by the system. These sales are reported, calculated and processed in a flexible way on the web interface on the internet, instantly or later from your mobile device.

The data collected on the embedded system are instantly transferred to the Main Servers via GPRS connection. The Pump Attendant Recognition System controls the information about the pump attendant making the refueling. In this way, it is also compatible with shift working systems. It works fully integrated with Vehicle Recognition System and Customer Recognition System.

In the Construction Site Automation, the data is transferred to the Central Office Servers over the GPRS system. When there is no internet connection, data is stored in the embedded system. When the internet connection is restored, the data is automatically transferred to the central server in encrypted form. The system communicates over GPRS and the data is completely stored on the system. It is saved on the central server as long as there is a connection.

"You will no longer need to be just in front of your office PC"



THE FUEL AUTOMATION SYSTEMS

ELECTRONIC DEVICE PRODUCTION PORTFOLIO

TUVA RFX2 CARD READER 13.56 MHz Card Reader

RFID 13.56 MHz terminals are card readers that can read contactless smart cards, also known as Mifare. The embedded software on the RFID 13.56 MHz card reader can be customized by our engineers according to the application differences. These card readers are mounted on the automation systems of fuel stations and can be used in all automation systems.

- Tracking the sales that are done on the basis of pump attendant.
- Sales / Performance information of the pump attendant at all times that are recorded.
- It is compatible with promotion and automation systems and can be selected modularly.
- Thanks to detailed reporting, many information such as which sale was made by which pump can be easily accessed.
- Unlimited number of pump attendant and cards can be defined to the system.

TUVA RFX3 KEYPAD CARD READER

13.56 MHz Card Reader

It is an enhanced model of the TUVA RFX2 card reader. It is used for data entry in the Customer Recognition System, the Vehicle Recognition System and the Construction Site Automation Systems. The Enhanced Keypad Card Reader integrated into the

ELPO Fuel Automation System makes it possible to enter the vehicle license plate-kilometer information. Moreover, it follows the working hours of the heavy construction machinery as the vehicle or the customer's automation member card is introduced to the system.



TUVA TTX VEHICLE RECOGNITION DEVICES

This custom device provides full control for your fuel consumption. The Tuva Vehicle Recognition device tracks how much fuel you have refilled and spent per vehicle, per driver, on a monthly, weekly, or daily basis.





TUVA CUX CONVERTOR

Our custom-designed converter is designed as an intermediate module which transforms RS485 communication protocol to USB. In this way, you can use your USB port as a standard serial port (COM port) and communicate with a device that is connected to your computer.

- It is compatible with USB Standards.
- It supports 300...115.2kb speed.
- Direction control on RS485 side.
- 15KW insulation between ports.
- LED control(which shows device is active)
- This device gets all its energy from USB ports. There is no need for external power supply.
- It detects automatically bound rate from USB side
- ESD(electro-static- discharge)



TUVA ETOS TANKER AUTOMATION DEVICE

ETOS, as a part of the ELPO Tanker Truck Automation System, provides great convenience in tanker truck automation system with its Plug-and-Play feature. It is very simple to configure the device. It is compatible with other automation systems as it works with ETOS HTTP/SOAP protocol.

It is very easy to use. According to the optional device model, it also prints a receipt from the receipt printer after refueling. Thus, a document containing refueling information is delivered to the user. Again, according to the optional device model, it manages sales by installing an RFID card. It prevents the pump attendant from making sales without the card read. Thus, the information about who made the sale is obtained. Instant information of the fuel sale can be followed. The data can be instantly sent to the central server via GSM, GPS, GPRS. It works integrated with the Main Station Control Dashboard.



TUVA TMC2 TANK MANIFOLD CONTROLLER

Auto tank manifold controller device is a digital device that will replace PAKO switches currently used in manifold tank systems. Three different groups and four tanks in each group can be connected to each other with a manifold

on the auto tank manifold controller. All transactions made on the device are electronically transferred to the tank automation system in real time. With this controller, it can be followed which

tank is use in a group of tanks. In addition, optionally the desired group can be directed to the desired tank via the communication (RS485) with the automation software.



TUVA ACX AUTOMATION CONTROL DEVICE

It is a custom-designed device that allows peripheral units working with different protocols in Automation Systems to communicate with each other.

Due to its structure suitable for expansion, external modules can be attached to the Base Unit. In this way, optionally the screen, Wi-Fi, GSM and Ethernet modules can be easily integrated into the system according to the configuration and can be changed when needed.



FUEL PUMP SYSTEMS

Classic 1 Series
Single Fuel Pump

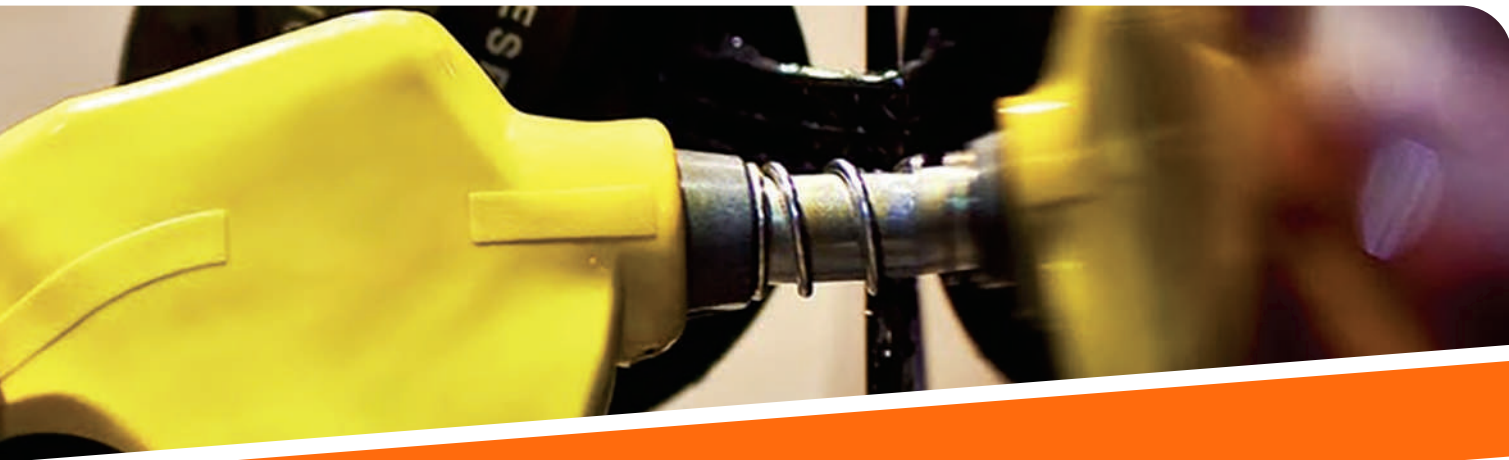


Classic 1 Series
Dual Fuel Pump



Classic 3 Series
Narrow-Type Fuel Pump





▶ **Classic 3 Series**
Wide-Type Fuel Pump



▶ **Classic 5 Series**
Multimedia Fuel Pump
(Leaf Model)



▶ **Classic 6 Series**
Multimedia Fuel Pump

FUEL TANK SYSTEMS

MOBILE GAS STATION SOLUTIONS







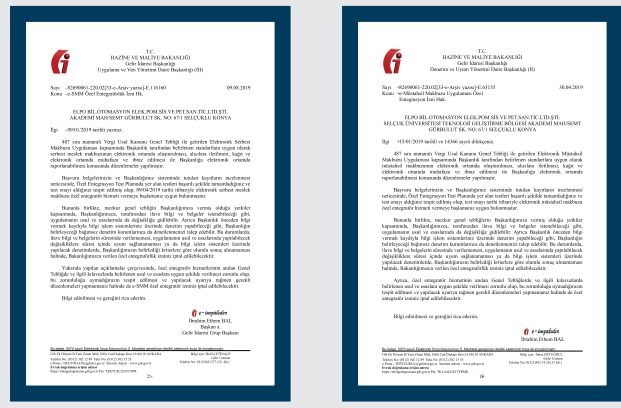
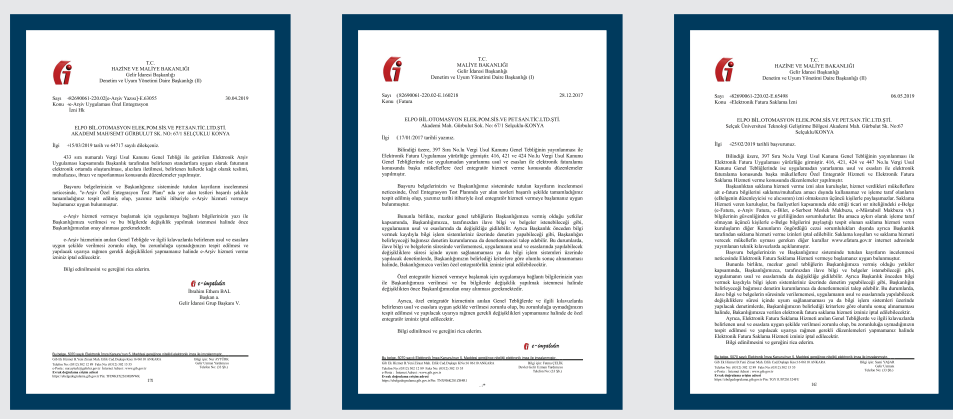
CERTIFICATES





FAST, PRACTICAL, ROBUST

ELPO is among a limited number of private companies authorized by the Turkish Revenue Administration for "producing and storing valuable electronic documents".



7/24

TECHNICAL SUPPORT / CALL CENTER

ELPO IT & ELECTRONICS

0850 532 0 724



ELPO IT & ELECTRONICS

www.elpootomasyon.com support@elpootomasyon.com [+ 90 850 532 0 724](tel:+908505320724)
www.elpo.com.tr support@elpo.com.tr [+ 90 332 262 00 25](tel:+903322620025)

[Bilişim Vadisi \(IT Valley\)](#)
Muallimköy Mh. Deniz Cad. No:143/5 Kat:15 Daire:90-91 GEBZE/KOCAELİ/TURKEY

[Selçuk Üniversitesi Teknoloji Geliştirme Bölgesi \(Selçuk Uni. Tech.Dev.Zone\)](#)
Akademi Mah. Gürbulut Sok. No:67 - G/345-346-347-348 Selçuklu/KONYA/TURKEY

